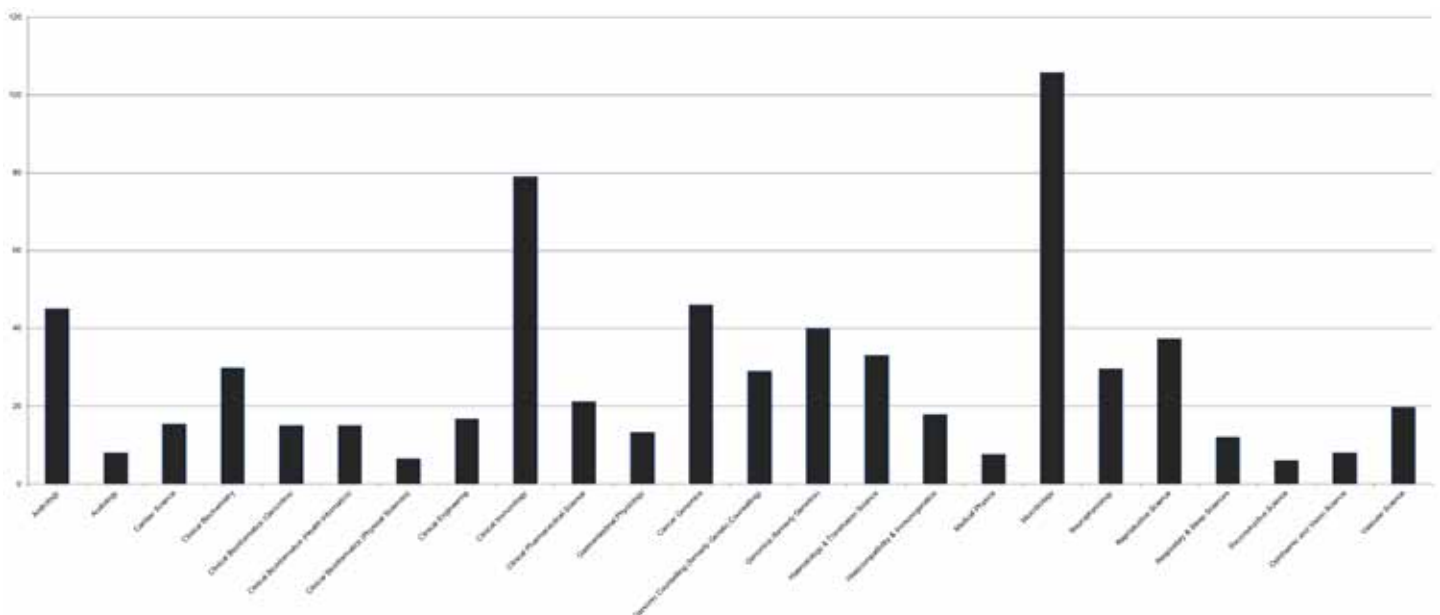


## Competition ratios for the Scientist Training Programme (STP) Direct Entry

For the most recent recruitment round of 2018, there were 20 applications to every STP post. In 2017 there were 21 applications to every STP post. In 2016 there were 22 applications to every STP post; in 2015 there were 26 applications to every STP post and in 2014 there were 31 applications to every STP post. You will find below the individual graphs and data detailing the competition ratios for the years 2014 to 2018.

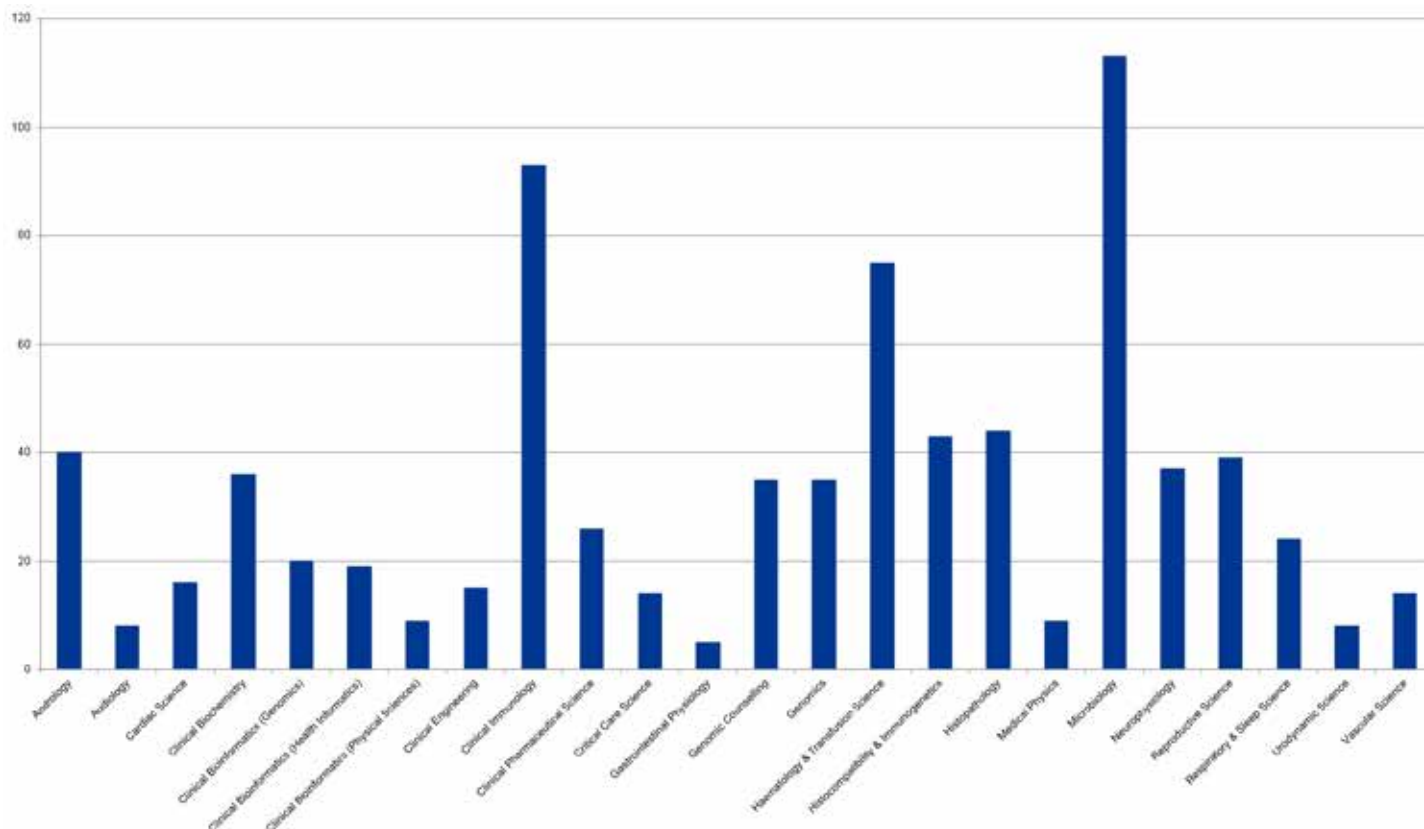
### 2018 applications



## 2018 data

Specialism	Number of applications	Number of direct entry posts	Competition ratio 2018
Andrology	90	2	45
Audiology	104	13	8
Cardiac Science	541	35	15.5
Clinical Biochemistry	566	19	29.8
Clinical Bioinformatics (Genomics)	135	9	15.0
Clinical Bioinformatics (Health Informatics)	45	3	15.0
Clinical Bioinformatics (Physical Sciences)	39	6	6.5
Clinical Engineering	234	14	16.7
Clinical Immunology	237	3	79.0
Clinical Pharmaceutical Science	191	9	21.2
Critical Care Science	0	0	0
Gastrointestinal Physiology	40	3	13.3
Cancer Genomics	414	9	46.0
Genomic Counselling (formerly Genetic Counselling)	435	15	29.0
Genomics (formerly Genetics)	520	13	40.0
Haematology and Transfusion Science	265	8	33.1
Histocompatibility and Immunogenetics	107	6	17.8
Histopathology	0	0	0
Medical Physics	509	67	7.6
Microbiology	317	3	105.7
Neurophysiology	207	7	29.6
Reproductive Science	336	9	37.3
Respiratory and Sleep Sciences	108	9	12.0
Urodynamic Science	0	0	0
Reconstructive Science	49	8	6.1
Ophthalmic and Vision Science	32	4	8.0
Vascular Science	197	10	19.7

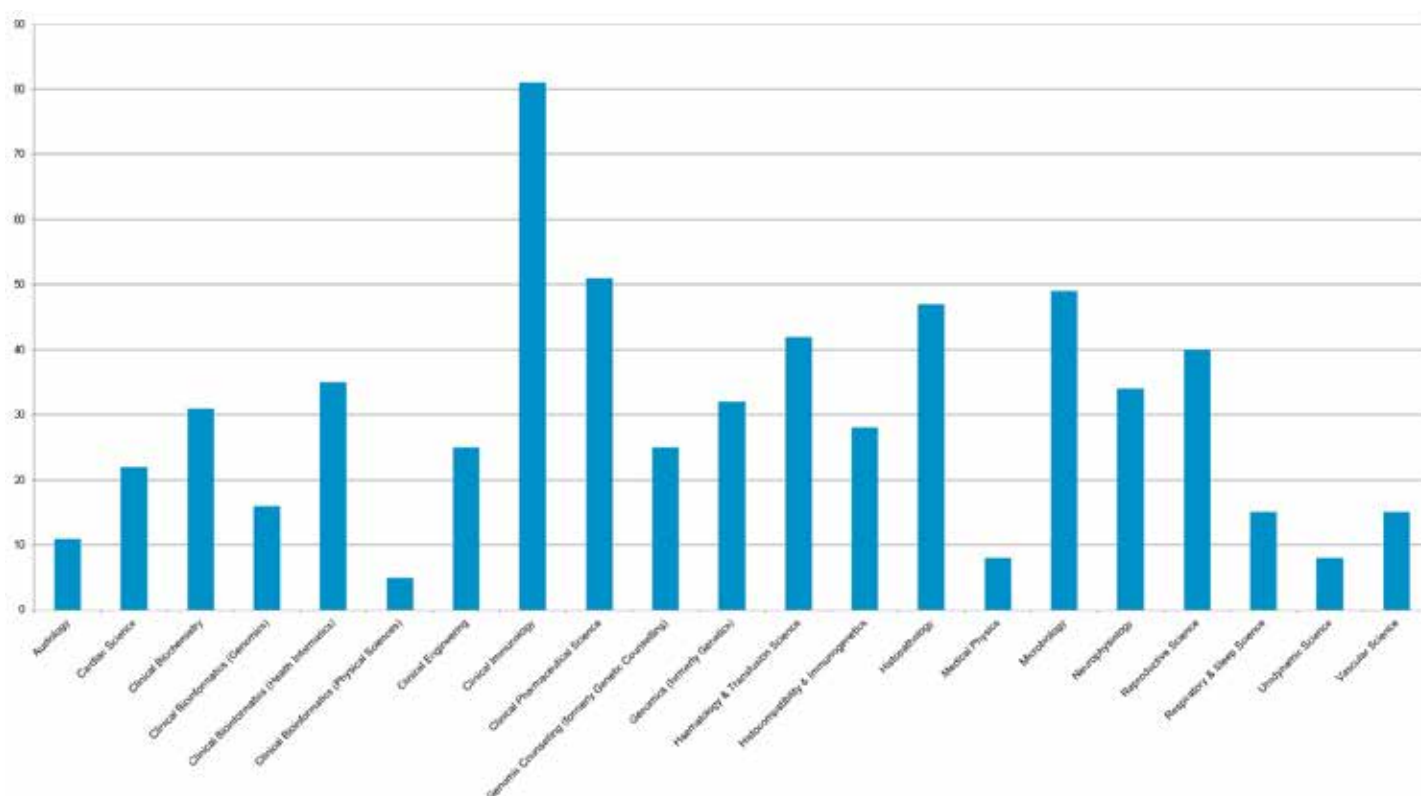
## 2017 applications



## 2017 data

Specialism	Number of applications	Number of direct entry posts	Competition ratio 2017
Andrology	79	2	40
Audiology	152	20	8
Cardiac Science	519	33	16
Clinical Biochemistry	656	18	36
Clinical Bioinformatics (Genomics)	182	9	20
Clinical Bioinformatics (Health Informatics)	56	3	19
Clinical Bioinformatics (Physical Sciences)	44	5	9
Clinical Engineering	247	16	15
Clinical Immunology	280	3	93
Clinical Pharmaceutical Science	154	6	26
Critical Care Science	54	4	14
Gastrointestinal Physiology	29	6	5
Genomic Counselling (formerly Genetic Counselling)	390	11	35
Genomics (formerly Genetics)	660	19	35
Haematology and Transfusion Science	225	3	75
Histocompatibility and Immunogenetics	85	2	43
Histopathology	88	2	44
Medical Physics	546	64	9
Microbiology	340	3	113
Neurophysiology	260	7	37
Reproductive Science	275	7	39
Respiratory and Sleep Sciences	119	5	24
Urodynamic Science	8	1	8
Vascular Science	138	10	14

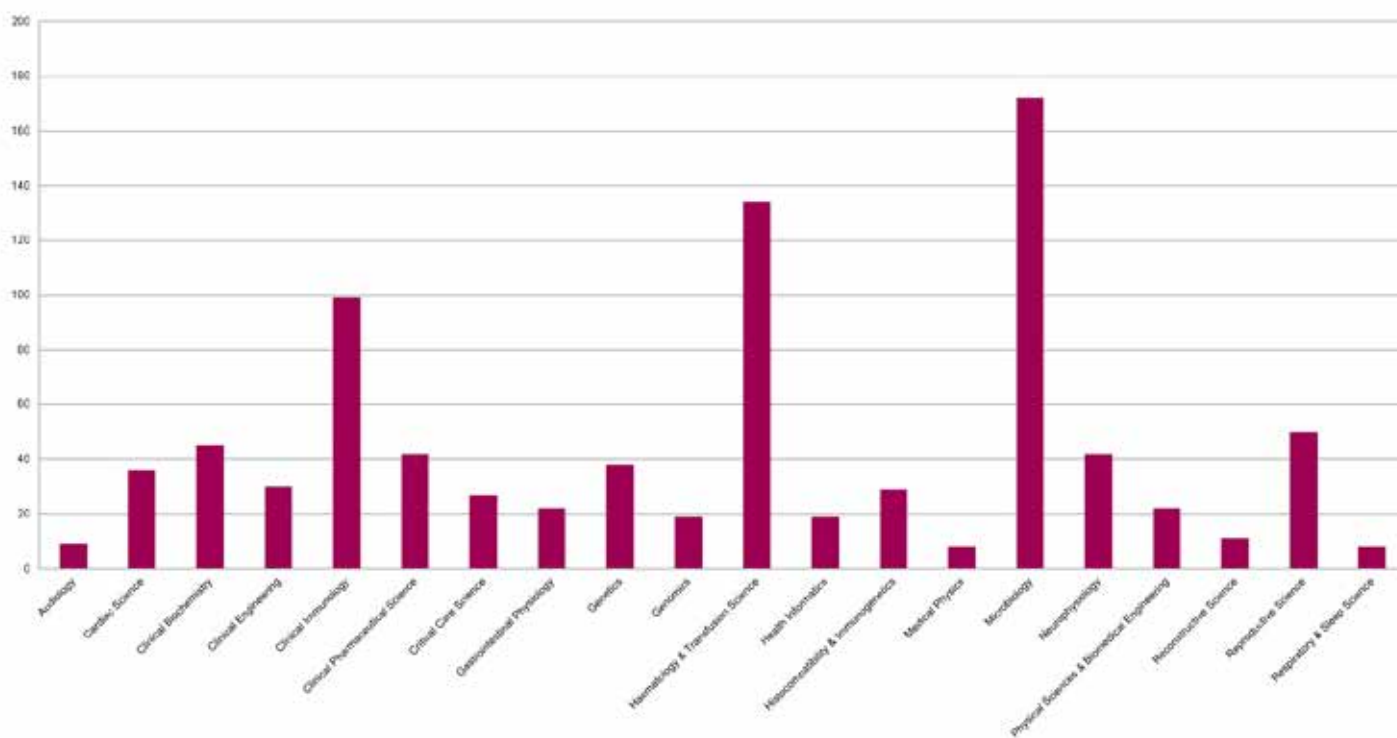
## 2016 applications



## 2016 data

Specialism	Number of applications	Number of direct entry posts	Competition ratio 2016
Audiology	129	12	11
Cardiac Science	546	25	22
Clinical Biochemistry	648	21	31
Clinical Bioinformatics (Genomics)	181	11	16
Clinical Bioinformatics (Health Informatics)	35	1	35
Clinical Bioinformatics (Physical Sciences)	42	8	5
Clinical Engineering	199	8	25
Clinical Immunology	323	4	81
Clinical Pharmaceutical Science	153	3	51
Gastrointestinal Physiology	26	4	7
Genomic Counselling (formerly Genetic Counselling)	368	15	25
Genomics (formerly Genetics)	766	24	32
Haematology and Transfusion Science	334	8	42
Histocompatibility and Immunogenetics	85	3	28
Histopathology	93	2	47
Medical Physics	504	62	8
Microbiology	442	9	49
Neurophysiology	272	8	34
Reproductive Science	283	7	40
Respiratory and Sleep Sciences	152	10	15
Urodynamic Science	8	1	8
Vascular Science	179	12	15

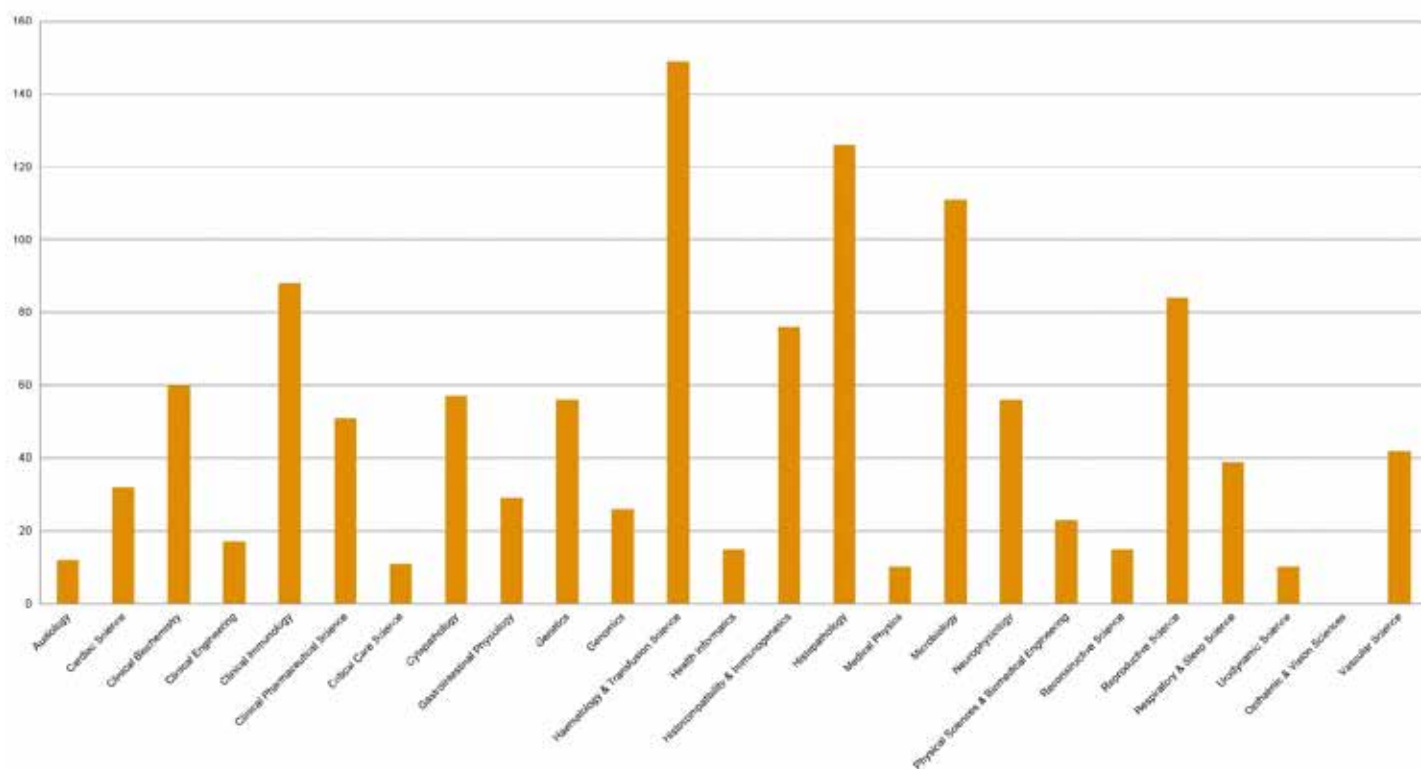
## 2015 applications



## 2015 data

Specialism	Number of applications	Number of direct entry posts	Competition ratio 2015
Audiology	246	25	9
Cardiac Science	687	19	36
Clinical Biochemistry	871	19	45
Clinical Engineering	246	8	30
Clinical Immunology	396	2	99
Clinical Pharmaceutical Science	211	5	42
Critical Care Science	54	3	27
Gastrointestinal Physiology	44	2	22
Genetics	879	23	38
Genomics	252	13	19
Haematology and Transfusion Science	268	1	134
Health Informatics	57	2	19
Histocompatibility and Immunogenetics	205	7	29
Medical Physics	606	72	8
Microbiology	516	3	172
Neurophysiology	294	6	42
Physical Sciences and Engineering	91	2	22
Reconstructive Science	71	6	11
Reproductive Science	353	7	50
Respiratory and Sleep Sciences	140	6	8

## 2014 applications



## 2014 data

Specialism	Number of applications	Number of direct entry posts	Competition ratio 2014
Audiology	274	22	12
Cardiac Science	1054	33	32
Clinical Biochemistry	1254	21	60
Clinical Engineering	298	18	17
Clinical Immunology	438	5	88
Clinical Pharmaceutical Science	254	5	51
Critical Care Science	45	4	11
Cytopathology	57	1	57
Gastrointestinal Physiology	58	2	29
Genetics	954	17	56
Genomics	209	8	26
Haematology and Transfusion Science	446	3	149
Health Informatics	61	4	15
Histocompatibility and Immunogenetics	151	2	76
Histopathology	126	1	126
Medical Physics	674	66	10
Microbiology	779	7	111
Neurophysiology	333	6	56
Physical Sciences and Biomedical Engineering	136	6	23
Reconstructive Science	58	4	15
Reproductive Science	335	4	84
Respiratory and Sleep Sciences	196	5	39
Urodynamics Science	30	3	10
Vascular Science	212	5	42