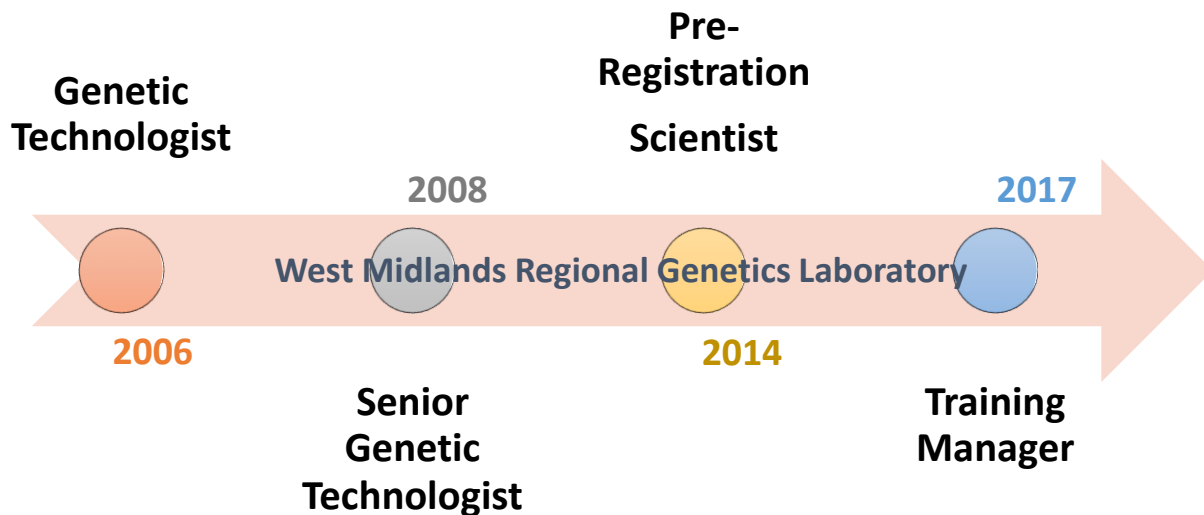


Your Training Officer and You

Sarah Clinton | Training Manager, West Midlands Regional Genetics Laboratory



My background



TO-DO LIST

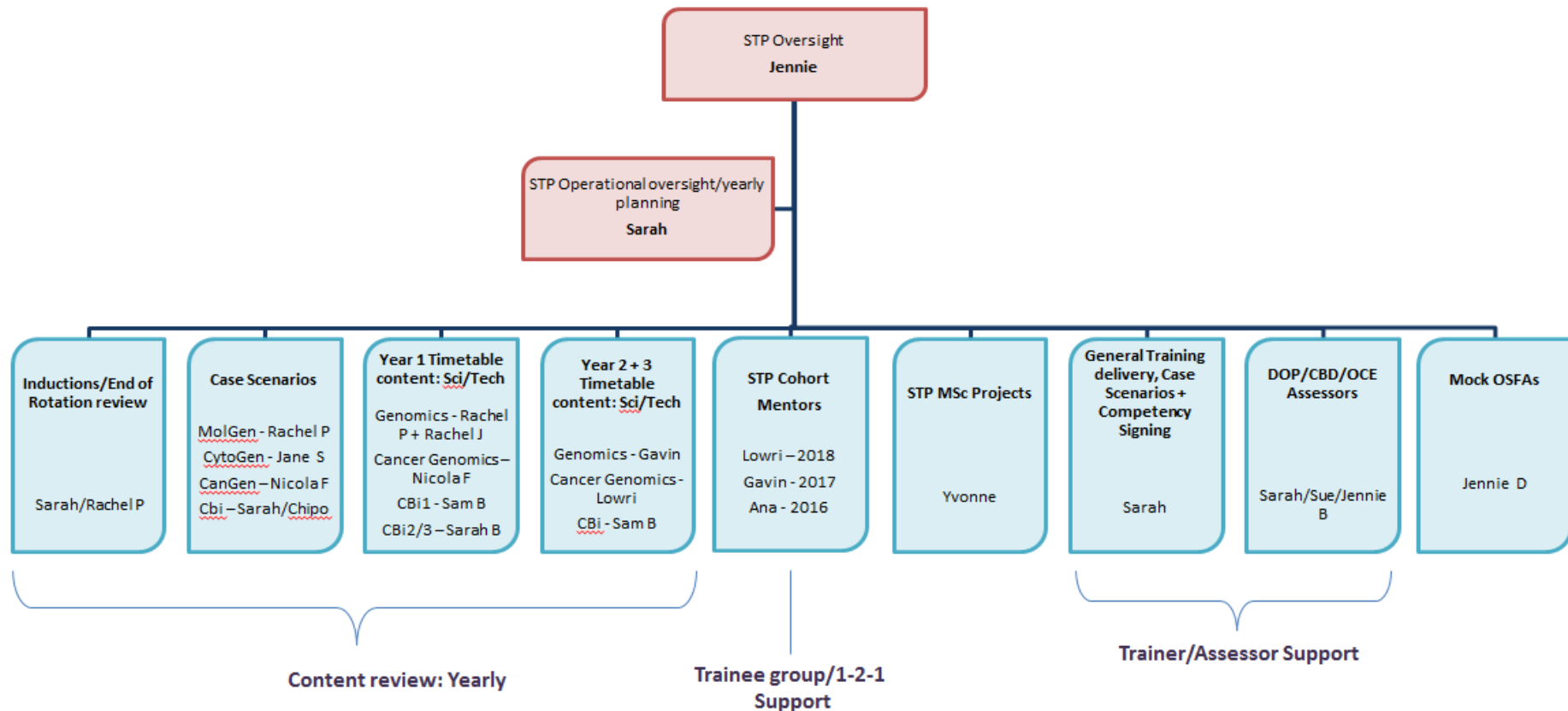
- Operational Management of the STP**
- Support Foundation and Degree Apprenticeships
- Support for MSc applications
- Mentoring staff
- Laboratory-wide CPD
- Internships
- Recruitment/Open Day
- Wider Education and Training roles

Q: How will your training will be facilitated in the workplace?

A: This depends on the size and make up of your laboratory

...But there are common themes you can expect

Example Laboratory Training Network/Group



What you can expect from us: Planning

Timetables: Yearly and Rotation Specific.

- Help you to meet the learning outcomes of the STP
- Offer direction and help with planning your workload

1st Year Trainee rotations 2018-2019

	Sept				Oct				
	03-Sep	10-Sep	17-Sep	24-Sep	01-Oct	08-Oct	15-Oct	22-Oct	29-Oct
	36	37	38	39	40	41	42	43	4
Genomics	Lab Induction	STP Ind	Genetics	Genetics	Prof Practice		Clinical Bioinformatics	Repro Science	
	Lab Induction	STP Ind	Genetics	Genetics	Prof Practice		Clinical Bioinformatics	Repro Science	
Cancer Genomics	Lab Induction	STP Ind	CBi1	Genetics	Prof Practice		Clinical Bioinformatics		
	Lab Induction	STP Ind	CBi1	Genetics	Prof Practice		Clinical Bioinformatics	22nd Oct Trust Induction	
Bio	Lab Induction	STP Ind	CBi1		Prof Practice	Health Informatics	Clinical Bioinformatics	22nd Oct Trust Induction	
	Lab Induction	STP Ind	Gen Couns	Genetics	Prof Practice		Clinical Bioinformatics		
Genomic Counselling	Lab Induction	STP Ind	Gen Couns	Genetics	Prof Practice		Clinical Bioinformatics		
	Lab Induction	STP Ind	Gen Couns	Genetics	Prof Practice		Clinical Bioinformatics		

Week 1: Paul Prown					
10/09/2018	Monday	Tuesday	Wednesday	Thursday	Friday
AM	STP Induction NSHCS	Specimen reception	Elective presentations ERC 9.30-11.30 Specimen Reception	Duty technologist/scientist	STP Coffee morning Duty technologist/scientist
PM					
Week 2: Emily Wright/Lucy Harper					
17/09/2018	Monday	Tuesday	Wednesday	Thursday	Friday
AM	STUDY DAY	Extraction	Extraction	Extraction	Extraction
PM					
TWO WEEKS - MANCHESTER TEACHING BLOCK					
Week 3: Angela Harris/Emma Waldron					
08/10/2018	Monday	Tuesday	Wednesday	Thursday	Friday
AM	STUDY DAY	Bloods	Bloods	FISH	FISH
PM					
TWO WEEKS - MANCHESTER TEACHING BLOCK					
Week 4: Laura Ford					
29/10/2018	Monday	Tuesday	Wednesday	Thursday	Friday
AM	STUDY DAY	ARRAY	ARRAY	ARRAY	ARRAY
PM					
Week 5: Rebecca Gibbs					
05/11/2018	Monday	Tuesday	Wednesday	Thursday	Friday
AM	STUDY DAY	PCR/Fragment	Analysis - MLPA & fragment PCR/Fragment	PCR/Fragment	PCR/Fragment
PM					

What you can expect from us: Planning

Planned assessments: DOPs, CBDs and OCEs

- Allows you to prepare for assessment: direct training and collating evidence
- Ensuring you are meeting the required standards for each module

Planned review points: Multi-source Feedback (MSF) and Mid-term Review of Progression (MRP)

- Monitoring your progression and directing you as necessary
- Identify your strengths and areas for development

What you can expect from us: Support

Educational supervision: Training Officer

- Ensuring you are safe to practice as a Clinical Scientist

Mentoring: 1-2-1 support

- Regular meetings
- Guidance on your specialism and the role of a Clinical Scientist

Trainers and Assessors

- Timely signing off of competencies and assessments with detailed, constructive feedback



What you can expect from us: Support

Role models, STP Cohort and STP Training Network

- Showcasing the importance of the HCS role for patients
- Demonstrating high levels of professionalism
- Insight into where careers in HCS can take you

Access to training funds

- Reimbursement for attendance at your Academic Institution
- Attendance at meetings and conferences that enhance your training

What I'm really thinking
Health & wellbeing

What I'm really thinking: The STP Training Officer/Manager

This is your training and yes we want you take the lead, but please ask me for help when...

Sat 13 Jan 2018 09:00 GMT

f t e 23 251



The STP Training Manager: What I'm really thinking...

I want you to do your best

I want you to be proactive and take opportunities that will enhance your STP experience

I see you as someone **in-training**, not a qualified Clinical Scientist.

Please tell me if there is something effecting your ability to do your job

Use the tools, policies and procedures in place at your Trust, NSHCS or STP network when you need help.

Don't compare yourself to the experiences and academic achievements of others