

# The STP, its aims, structure and overview

By Jane Lynch, Training Programme Director, NSHCS



# Objectives

- To understand the aims, structure, and overview of the STP.
- Know the functions of the NSHCS.
- Learn about what is required to complete the programme.

# The structure of the Scientist Training Programme



## University

MSc in Clinical Science:

- Academic teaching and assessment



## Employer

Work-based training:

- Practical training and assessment
- Contract of employment

# The National School of Healthcare Science

- The National School of Health Care Science (NSHCS) works in established partnerships with universities, training providers, commissioning leads and the professional bodies.
- We are part of Health Education England.
- We train scientists that will be leaders in healthcare, understanding and advising on the most recent advances in technology and innovations in patient care.
- We safeguard the delivery and quality of education and training for healthcare science nationally.



# The aims of the STP for your trainees:

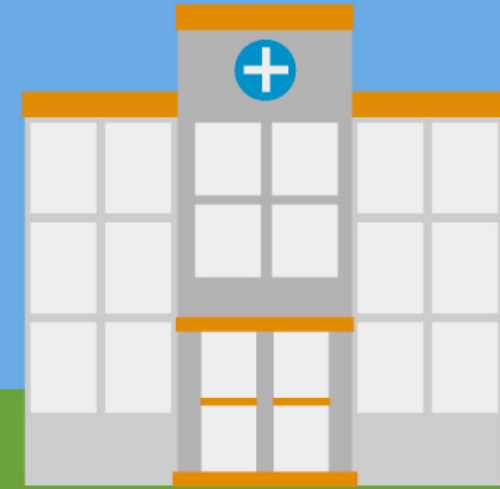
- Professional registration
- World class performance in clinical science.
- The acquisition of an appropriate level of underpinning scientific knowledge.
- Competency in undertaking complex scientific and clinical roles.
- Ability to define and choose investigative and clinical options.
- Make key judgements about complex facts and clinical situations within a quality assurance framework.
- Work directly with patients and have a positive impact on patient care and outcomes.
- Be involved, often in lead roles, in innovation and improvement, research and development.

# What happens in the first year?



## University

Broad introductory modules  
across your theme



## Workplace

Induction

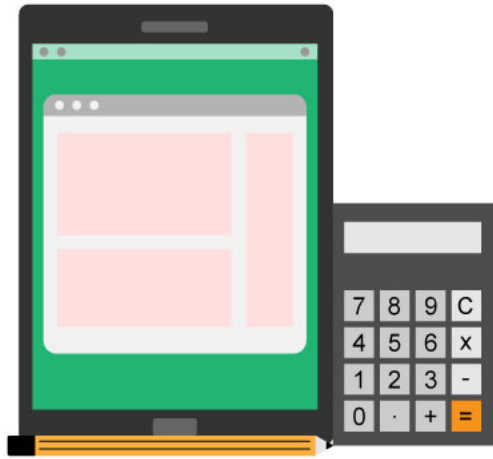
Rotation placements

Modules to complete  
(listed in the Curriculum Library)

# What happens after the first year?

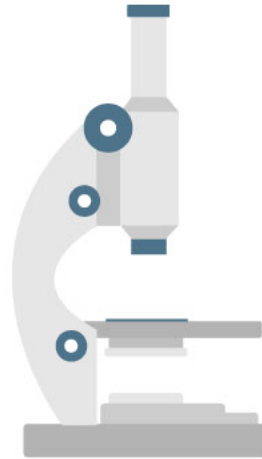
## University

Specialist teaching including research project



## Workplace

Specialist training largely based in home/host department; could be delivered across a consortia of departments



## Mid-term review of progression

Independent evaluation of progress





# Types of assessment in the workplace



## Competencies

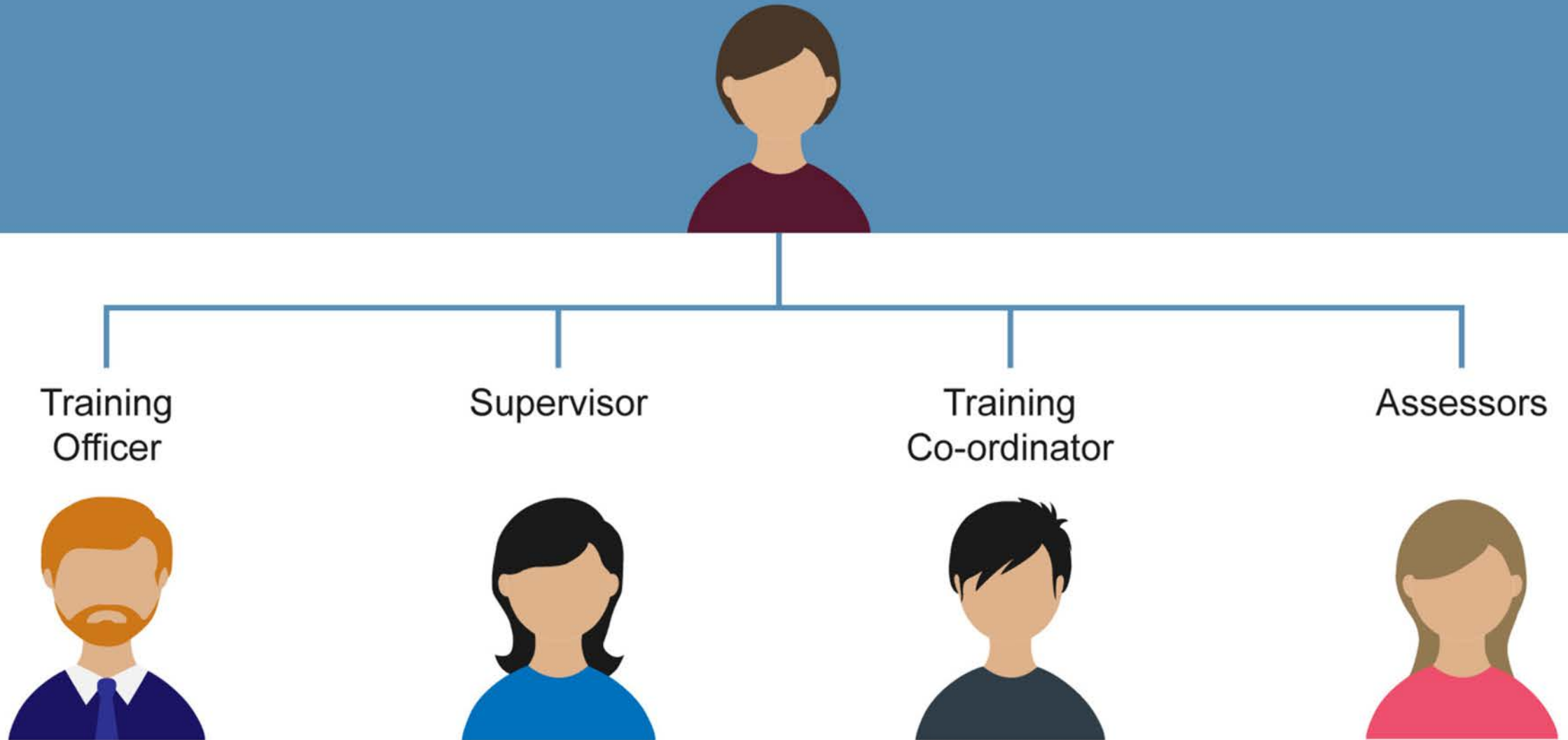
- Case-based discussion (CBD)
- Direct observations of practical skill (DOP)
- Multi-source feedback (MSF)
- Observed clinical event (OCE)



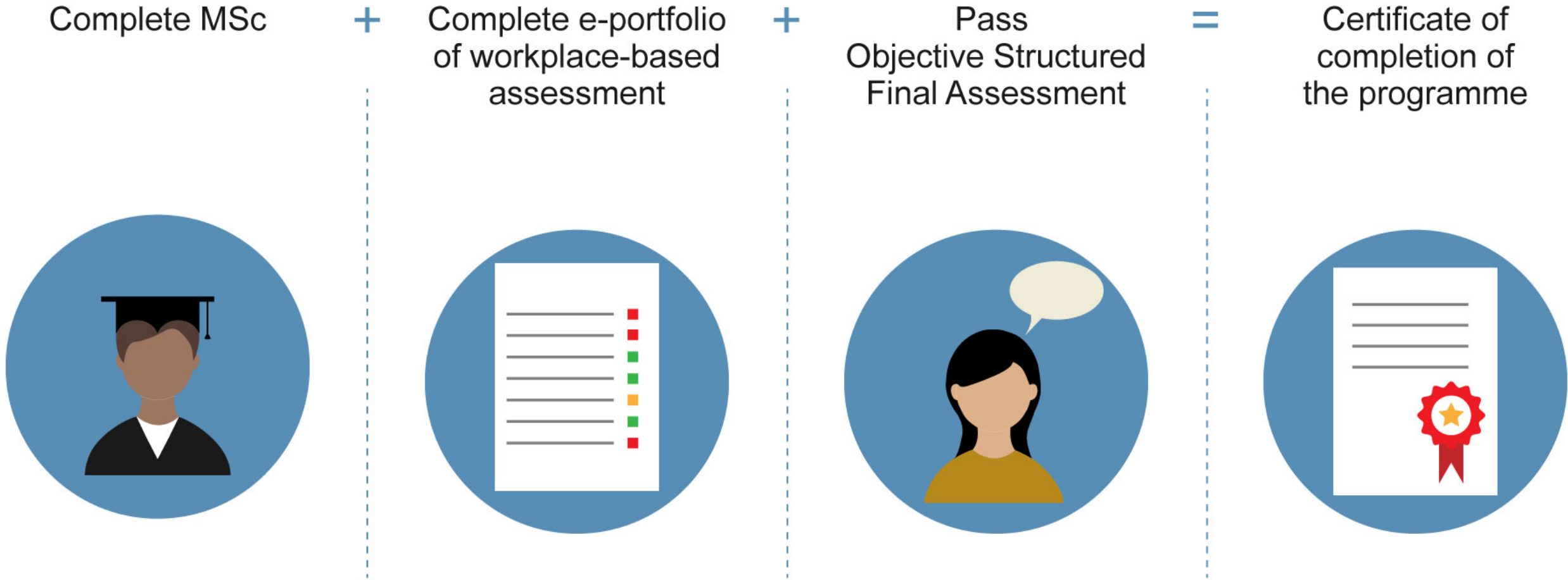
All recorded and reviewed in  
the e-portfolio



# Who will support me in the workplace?

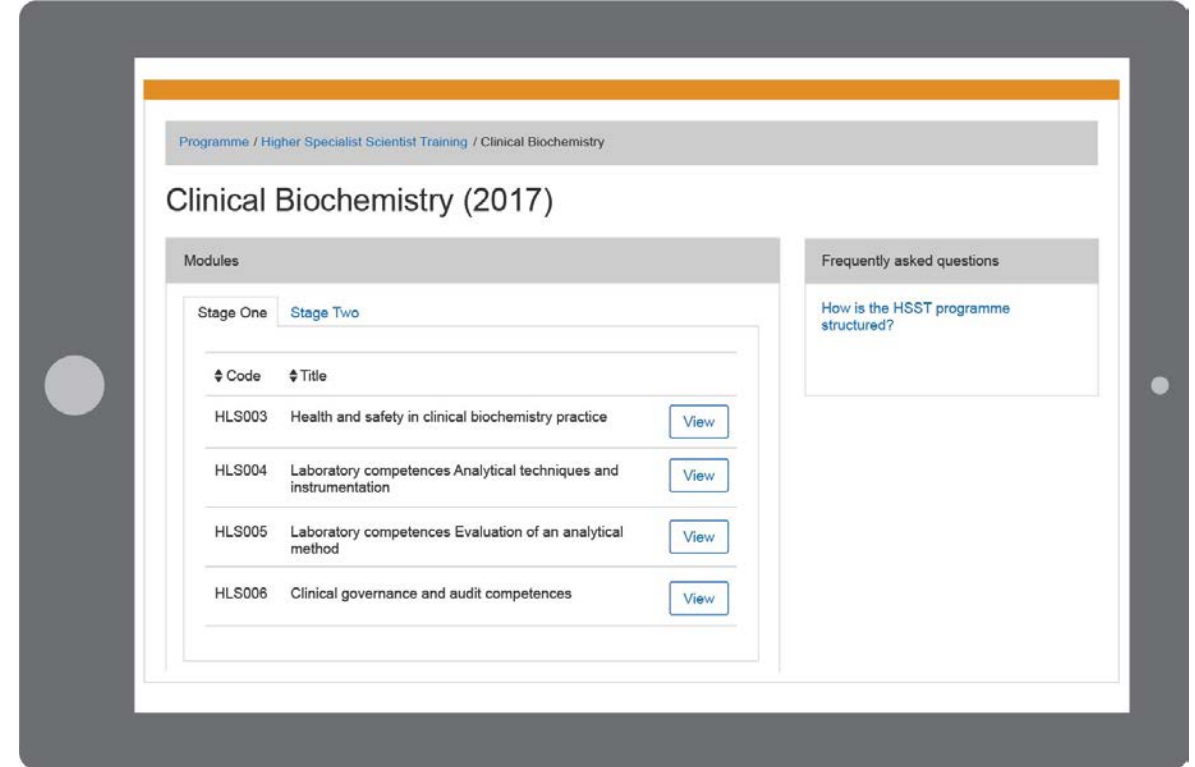


# How do I complete the programme?



# The Curriculum Library and the STP

- Current curriculum
- Easy guide to refer to.
- Module information which is mapped to work-based:
  - Learning outcomes
  - Competencies
  - Assessments
  - Academic content (MSc in Clinical Science).
  - Review currently in progress



<https://curriculum.nshcs.org.uk>

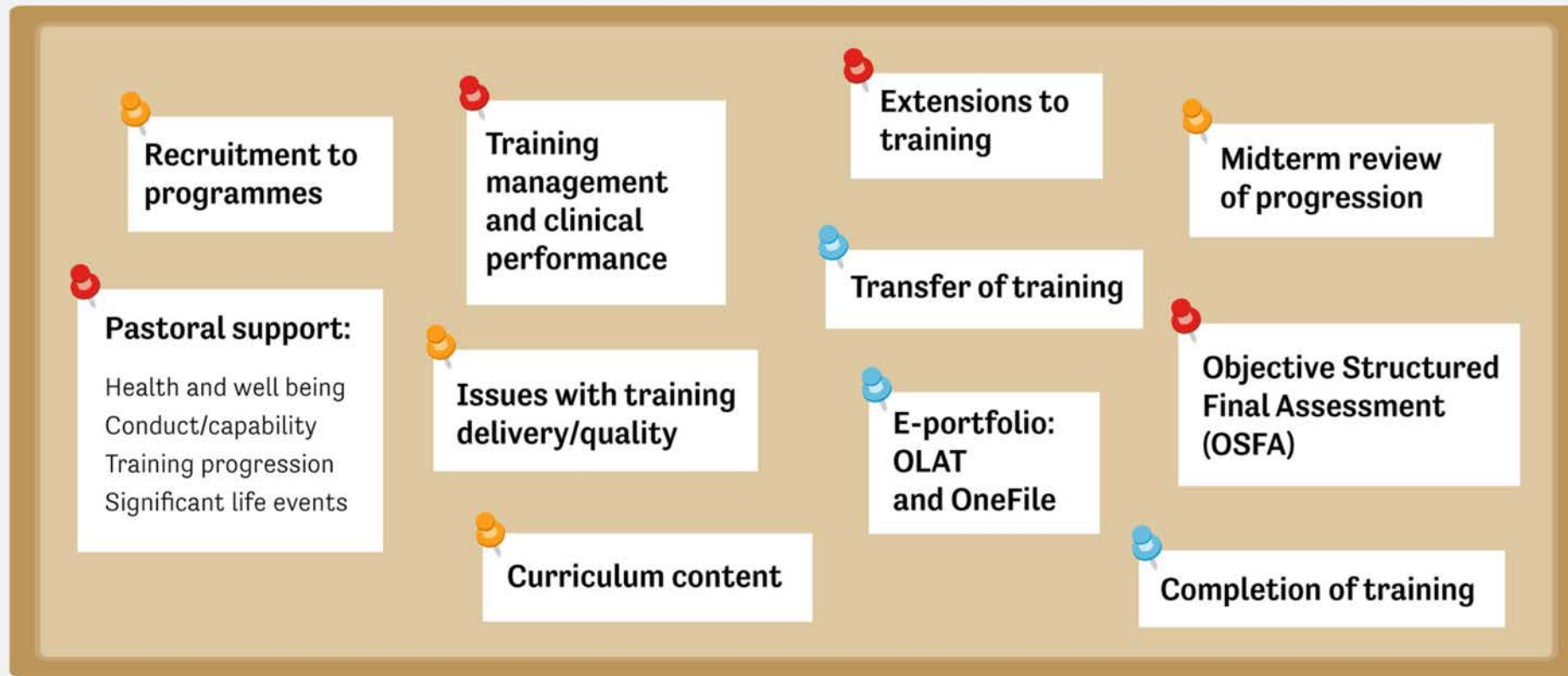
# Successful completion

- The NSHCS will issue trainees with a Certificate of Completion.
- The Academy of Health Care Science (AHCS) will issue trainees with a Certificate of Attainment of Equivalence.
- Can then apply to the HCPC (regulatory body) and apply to become a registered clinical scientist.





## In which areas does the School provide support for the STP?





## What other sources of support are there?

### **HR support or legal matters**

Contact local employer/HR department and liaise with training officer/line manager

### **Financial support**

Contact local HEE office or regional commissioner if in Scotland, Wales or Northern Ireland

### **Counselling**

Contact local employer/HR department and liaise with training officer/line manager.

### **Mental health**

Access Occupational Health locally and/or counselling services available from the employer or your GP

### **Adjustments/ changes to academic programmes**

Liaise with relevant University Programme Director

### **Registration and regulation**

Visit the Academy for Healthcare Science website [www.ahcs.ac.uk](http://www.ahcs.ac.uk) and the Health and Care Professions Council [www.hcpc-uk.co.uk](http://www.hcpc-uk.co.uk)

# Thank you!

