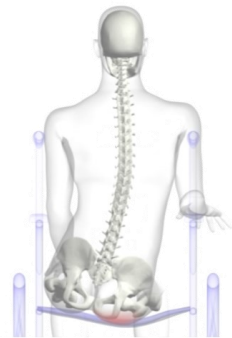
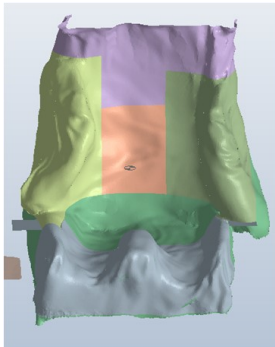


# Rehabilitation Engineering Unit Swansea

Scientific Training Programme (STP) Open Day  
Clinical Engineering: Rehabilitation Engineering



The open day will include a tour of the department, information about the department and the training scheme and an opportunity to speak to current Clinical Scientists and trainees.

**24th January 2020 @ 1:30pm - 3:30pm**

Specialist Rehabilitation Centre, Morriston Hospital

Please email [SBU.REU@wales.nhs.uk](mailto:SBU.REU@wales.nhs.uk) to book a place

<https://sbuhb.nhs.wales/hospitals/a-z-hospital-services/rehabilitation-engineering-unit/>